



Yuut Elitnaurviat

P E O P L E ' S L E A R N I N G C E N T E R

Alaska National Guard • Association of Village Council Presidents • Association of Village Council Presidents, Regional Housing Authority
Bethel Community Services Foundation • Calista Corporation • Donlin Gold • City of Bethel • Lower Kuskokwim School District
Orutsararmuit Native Council • UAF - Kuskokwim Campus • Yukon-Kuskokwim Health Corporation

Volume 7 , Issue 2
December 31, 2015

Kilbuck School Fire

On November 3, 2015 a fire in the Kilbuck School building displaced around 120 students from the Kuskokwim Learning Academy.

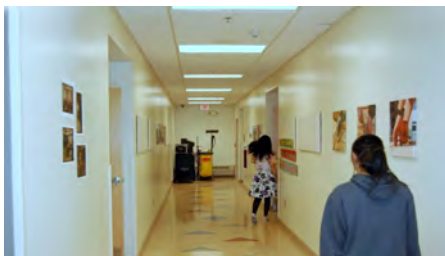


Photo by Lisa Demer of the Alaska Dispatch News

A big Yuut Elitnaurviat Welcome to KLA!



Above: Students from KLA are able to use the Yuut Elitnaurviat shop for Construction Trades training.



Above: The second floor of Yuut Elitnaurviat now houses both the DHAT program and the KLA classrooms.

Early in the morning of the fire at Kilbuck School, Operations Director Tiffany Tony walked over to the Yukon Dormitory and woke up the cook, telling him that he would have 120 unexpected students for lunch. While the fire was still burning (and visible from our conference room), Yuut Elitnaurviat (YE) staff met with Lower Kuskokwim School District (LKSD) staff to see what we could do to help. That night, 40 displaced Kuskokwim Learning Academy (KLA) students moved into the Yukon Dormitory. That was Tuesday, November 3rd. Two days later 120 KLA students were having class in the second floor of the

Administrative TESS building and at the Yuut Elitnaurviat Shop. It has been a busy year here at Yuut Elitnaurviat, but it got a different kind of busy that day.

Looking forward, the LKSD board of directors and YE Administration are researching the possibility of locating the new KLA site on the Yuut Elitnaurviat campus. YE stands ready to assist in any way possible to find KLA a new home. We believe having these two complementary programs on the same campus will further the missions of both KLA and Yuut Elitnaurviat.

Executive Director
Kurt Kuhne



Bethel CNA Program Graduates

Graduates from the CNA program that took place this Fall through a partnership between KuC, YKHC, and Yuut Elitnaurviat. From Left to Right: (Top) Trisha Hoffman, Eden Hendrix, Rosa Rodgers, Susan Taylor, Sandra Ingvalson. (Bottom) Larissa Flynn, Nancy Beans, Huey Samuelson.

Photo by Edie Barbour of the University of Alaska - Kuskokwim Campus

Upcoming Training Opportunities



Certified Nurse's Assistant (CNA); Jan. 11 - Apr. 26, 2016

The GED Works program will pay for current GED students or people who graduated with their GED or HS Diploma after May 1, 2012 to travel to Bethel and stay at Sackett Hall on the UAF-Kuskokwim Campus. Flights, meals, lodging, course fees, and all test fees will be paid for through the GED Works Program. **Students will be accepted based on a personal interview, criminal history, AND a letter of intent to hire by a local employer.**

GED Works Rural Facility Maintenance Technician (RFMT) Level 100 Training; Feb. 23 - Mar. 1, 2016

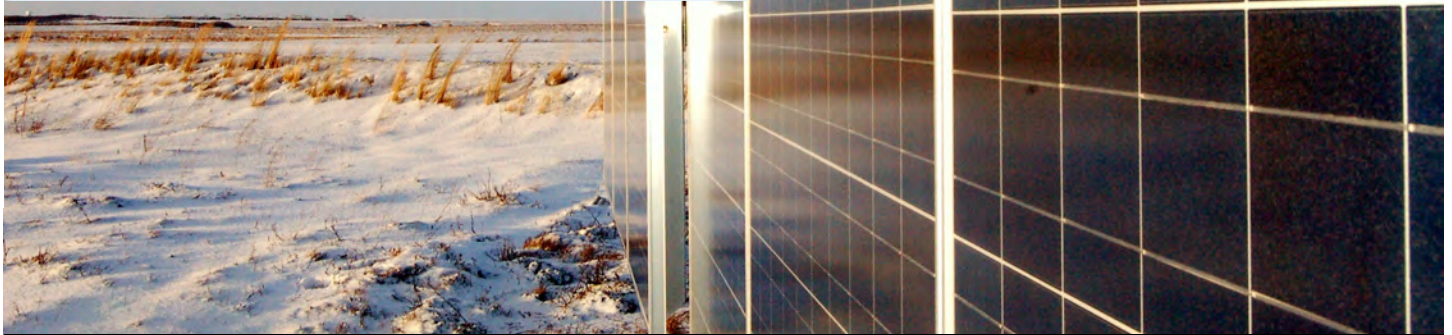
The GED Works program will pay for current GED students or people who graduated with their GED or HS Diploma after May 1, 2012 to travel to Bethel and stay at Sackett Hall on the UAF-Kuskokwim Campus. Flights, meals, lodging, and course fees will be paid for through the GED Works Program. **Students will be accepted based on a personal interview, criminal history, AND a letter of intent to hire by a local employer.**

Contact Haylea Keller, the GED Works Program coordinator, at (907) 543-0955 or email her at hkeller@yuut.org for more information, to apply, or to see if you qualify for one of our upcoming training opportunities.



Alternative Energy Systems

From January 1, 2015 to December 31, 2015 the alternative energy systems on the Yuut Elitnaurviat campus produced **50,544 kWh** of electricity! This is up 993 kWh from 2014 and is an estimated cost savings of **\$27,799.20** (based on an average cost of \$0.55/kWh).



Month (2015)	Wind Turbine #1 (kWh) 2015	Wind Turbine #2 (kWh) 2015	Wind Turbine #3 (kWh) 2015	Photovoltaic Array (kWh) 2015	2015 Total (kWh)	2014 Total (kWh)
January	1542	1540	1559	586	5227	4983
February	2041	2022	2062	738	6863	6530
March	951	891	917	1310	4069	6817
April	1005	918	985	1433	4341	3595
May	491	488	533	1240	2752	4116
June	684	629	589	1780	3682	3254
July	444	426	447	1251	2568	2967
August	1083	976	996	999	4054	2177
September	596	517	512	783	2408	3364
October	1019	983	991	544	3537	4891
November	1675	1623	1733	362	5393	2875
December	1818	1786	1853	193	5650	3982
Total (kWh)	13349	12799	13177	11219	50544	49551



Yuut Elitnaurviat

PEOPLE'S LEARNING CENTER

P.O. Box 869
Bethel, AK 99559
Phone: 907.543.0999
Fax: 907.543.0998
Website: www.yuut.org
Facebook: www.facebook.com/YuutElitnaurviat

What happened after the Kilbuck School Fire? Look Inside!

Preparing Local Workers for Local High-Wage Jobs

Yuut Driving Academy

Yuut Elitnaurviat's PTDI Certified Commercial Driving program completed a Full CDL training this quarter. David Graham of Bethel earned his Class A CDL and is the first graduate of the PTDI certified program! The next Six Week CDL Training program will be from Feb. 8, 2016 until March 11, 2016. Tuition is \$6,000 a student (which does not include lodging or meals), but there is a STEP grant scholarship that brings the tuition down to \$2,000 for qualified applicants. Contact Gerry Graves at (907) 543-0978 or email him at ggraves@yuut.org for more information, or to apply.



PAGE 4

CDL Program Graduate

David Graham of Bethel earned his Class A Commercial Driver License!