



Yuut Elitnaurviat

P E O P L E ' S L E A R N I N G C E N T E R

Alaska National Guard • Association of Village Council Presidents • Association of Village Council Presidents, Regional Housing Authority
Bethel Community Services Foundation • Calista Corporation • Donlin Gold • City of Bethel • Lower Kuskokwim School District
Orutsararmuit Native Council • UAF - Kuskokwim Campus • Yukon-Kuskokwim Health Corporation

December 31, 2016
Volume 8, Issue 2



Yuut Elitnaurviat has been offering training programs since the Kilburn Fire that moved the Kuskokwim Learning Academy onto campus, but we've only been able to do so by housing students with various partner organizations. Now we are once again fully operational with our new Kilburn Dormitory and four new training classrooms. If you or your organization have local workforce development needs, call us at (907) 543-0999 to reserve your space.



Workforce Development Classes This Quarter



GED Math Intensive

Yuut Elitnaurviat held a GED Math Intensive this quarter to help students with passing the Math portion of the GED Test Battery. Out of seven students who attended the intensive, five of them passed the math test and three of them earned their GED! We are currently planning similar intensives for 2017.

RFMT 100 – Workplace Fundamentals

Through its GED Works Grant from the US Dept. of Education, Yuut Elitnaurviat held a basic construction training for recent HS and GED graduates from the YK Delta. As a class project, the students built a footbridge which links YE's Kilbuck Dorm with the Trades Shop and the new classrooms.



RFMT 120 - Electrical Maintenance Fundamentals

In partnership with AVCP, Inc.'s Employment, Eligibility, and Training Department, Yuut Elitnaurviat held a 80 hour RFMT 120 class for previous RFMT 100 participants. In addition to learning electrical skills, the students built and wired in an outdoor outlet to plug in our commercial vehicles during the winter.



Workforce Development Classes This Quarter

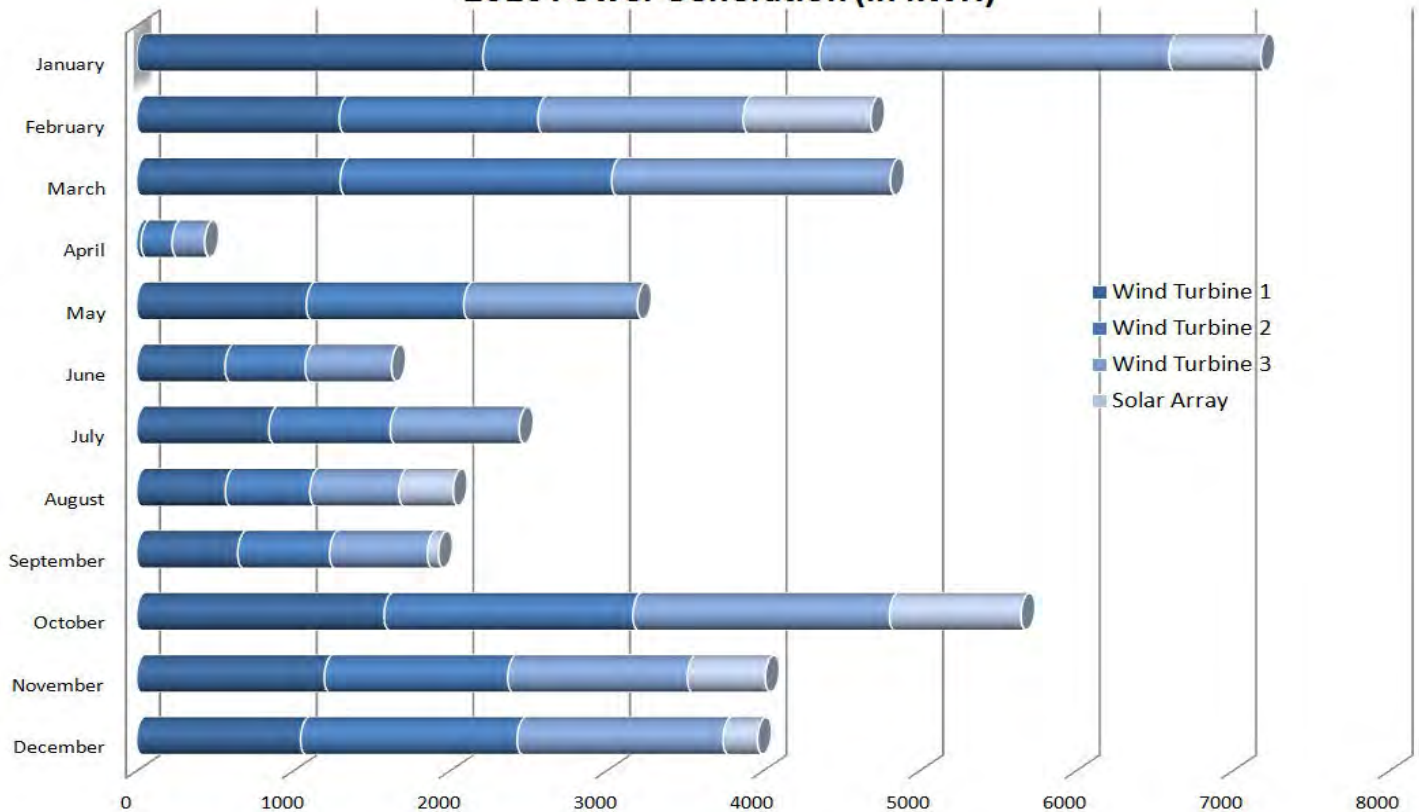
WELD 104 - Specialty Equipment Fabrication and Design

In partnership with AVCP, Inc.'s Employment, Eligibility, and Training Department and Transportation Department, Yuut Elitnaurviat held a 14 day welding training. The students, who all had previous welding experience, built a motorized vehicle for use in building rural roadways.



Yuut Elitnaurviat's Alternative Energy Systems

2016 Power Generation (in kWh)



From January 1, 2016 to December 31, 2016 the alternative energy systems on the Yuut Elitnaurviat campus produced **41,985 kWh** of electricity! This is down 8559 kWh from last year due to lower winds and technical issues with our systems. Regardless, this is an estimated cost savings of **\$23,092** (based on an average cost of \$0.55/kWh).

P.O. Box 869
Bethel, AK 99559
Phone: 907.543.0999
Fax: 907.543.0998
Website: www.yuut.org
Facebook: www.facebook.com/YuutElitnaurviat

**Prepare for the YKHC Hospital
Expansion with classes from YE!**

Preparing Local Workers for Local High-Wage Jobs

Upcoming Workforce Development Training

DRIV 150 - Commercial Driver Training; 2/6/17 - 3/17/17

There will be a six week PTDI Certified Commercial Driver Training course taking place at YE this winter. Tuition is \$6,000/person, but funding assistance is available. Contact Gerry Graves at (907) 543-0978 for more information.



RFMT 100 - Workplace Fundamentals; 2/14/17 - 2/23/17

This is a 10 day basic construction course aimed at increasing local employment for YKHC's upcoming hospital expansion project. Full funding is available for qualified applicants. Contact Haylea Keller at (907) 543-0955 for more information.

HLTH F107 - Nurse Aide Training; 4/4/17 - 5/19/17

There will be a six week Certified Nurse Aide (CNA) training taking place at YE in the Spring. Full funding is available for qualified applicants. A GED or HS Diploma and a clean criminal history are prerequisites to apply. Contact Haylea Keller at (907) 543-0955 for more information.

